



ONLY *THE* HUMAN

Becoming a Member



A New Kind of Cultural Organisation



Only the Human exists because we believe that everybody has a need to connect, express their creativity and contribute to their culture. We do this through comedy and play because we know laughter builds strong bonds between people - and everything we do depends on strong relationships.

In 2019, we made the decision that the best way for us to do this work was **to become a cooperatively owned non-profit**. Playfulness depends on cooperative working relationships grounded in deep trust. We wanted the values and behaviours demonstrated in our classes and performances to be reflected in how we run the organisation.

On November 26th, 2020, we held our formation meeting and signed our organisation in to law. We now have a way for our community to take ownership of, and get involved in, building a community of improv, sketch and experimental comedy in Perth.

We're inviting you to join us.

Our Theory of Change

A *Theory of Change* connects the activities we do to the kind of world we want to see. It keeps us honest and mission-focused.



By making comedy and play accessible and inclusive of all West Australians...



We will create communities centred around deep trust, laughter, and creativity...



Which will create a more inclusive, mentally healthy Western Australia better equipped to face complex challenges together.



Cooperatives


Cooperatives are organisations in which the organisation is **collectively owned and run by its members**. They are defined by voluntary and open membership, democratic decision making and a concern for community.

Technically speaking, we are a **non-distributing cooperative without share capital**. Like a non-profit, this means that any profits from our activities are reinvested into the cooperative.

Cooperatives stand in contrast to for-profit organisations, who exist to provide a financial return to shareholders. We are also different to most not-for-profits in that we are directly accountable to our members.

A cooperative is essentially an organisation that runs on the principles of an improv scene - equality, cooperation, deep listening and shared purpose.

Visit cooperativeswa.org.au to learn more about cooperatives in Western Australia.





Membership

"If you want to go fast, go alone. If you want to go far, go together." - African Proverb



The short version: If you love improvising and want to see our community grow, you should become a member.

One of the core requirements of membership is active participation. Members are expected to:

- Attend events as a participant, to a minimum of roughly four events per year.
- Contribute in key decision-making activities including voting at annual general meetings.

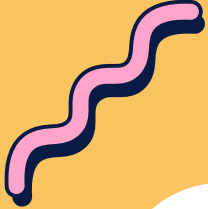
Members are also expected to adhere to Only the Human's core behaviours and our anti-discrimination and harassment policy. High-commitment members are invited to join our working group or volunteer in an ongoing capacity.

[You can apply for membership here.](#)

Our Core Behaviours



Values aren't enough. Here are the things we actually do to keep our community flourishing.



1

BE PLAYFUL

2

SUPPORT GROWTH

3

BUILD COMMUNITY

4

ENSURE SAFETY

5

COLLABORATE FEARLESSLY

6

MAKE THINGS HAPPEN

*These may be out of date. Visit [our website](#) for the latest.



FAQs

Q: I don't have much experience with OTH. Can I join?

In order to ensure our community is safe, we generally like to get to know someone before admitting them as a member. We suggest coming to a few public events or taking a class before joining. If you know an existing member you may be able to bypass this. Lastly, if you're part of the international comedy diaspora and have studied elsewhere - drop us an email at hello@othcomedy.com and we may be able to arrange a provisional membership.

Q: Legally speaking, what rights and responsibilities do I have within the organisation?


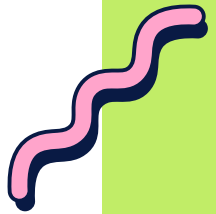

For a full understanding of the rights and responsibilities of membership, we suggest reading the Model Rules - the constitutional document of the cooperative.

Q: As a member am I required to actively volunteer?

A: Not at all. We recognise that people simply turning up to events and embodying the core behaviours is an active contribution to the organisation. You will occasionally be given the opportunity to provide input in to strategic decisions, but the time commitment for this is minimal.

Q: How can I contribute beyond the active membership requirements?

There are lots of roles and opportunities to make an ongoing contribution to the organisation, including joining the working group or forming an improv team. More information on this is in our members-only portal.





FAQs (continued)

Q: Are there any risks involved in becoming a member?

A: All fiduciary and legal risk is managed by the Board of Directors, so members are protected from any liability on behalf of the organisation.


Q: What happens if my application is denied?

You will be given a full refund. The board may or may not provide you with a reason for rejection.


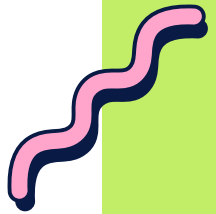
Q: On what grounds might the board reject my application?

Typically, the main reasons would be that we either (a) feel the applicant is unlikely to be able to satisfy active membership requirements, (b) feel the applicant has demonstrated behaviours contrary to our core behaviours and/or our anti-discrimination and harassment policy, or (c) we don't know the applicant well enough to make an informed judgment.

Q: \$50/year is a lot for me. What options do you have for someone facing financial hardship?



We don't want cost to be a barrier to participation for anyone. Just use the code "MEMBER10" at checkout and this will discount membership to \$10/year.





Contact Us



Aden Date
Director, Only the Human
0423 835 226
hello@othcomedy.com

